

11 класс базовый уровень В-1

$$n1 \quad \left(1\frac{7}{8} - 8\frac{1}{2}\right) \cdot 16 = \left(\frac{15}{8} - \frac{17}{2}\right) \cdot 16 = \frac{15-68}{8} \cdot 16 = \frac{-53}{8} \cdot 16 = -53 \cdot 2 = -106$$

Ответ: -106

$$n2 \quad \frac{3^9 \cdot 5^8}{15^7} = \frac{3^9 \cdot 5^8}{3^7 \cdot 5^7} = 3^2 \cdot 5 = 9 \cdot 5 = 45$$

Ответ: 45

$$n3 \quad 1) \quad \begin{aligned} &100p - 100\% \\ &xp - 130\% \\ &x = \frac{130 \cdot 100}{100} = 130 \end{aligned}$$

$$2) \quad 1200 : 130 = 9,2 \dots$$

Ответ: 9

$$n4 \quad S = \frac{1}{2} \cdot 16 \cdot 8 \cdot \frac{1}{3} = 8 \cdot 3 = 24$$

Ответ: 24

$$n5 \quad (2\sqrt{13} - \sqrt{5})(2\sqrt{13} + \sqrt{5}) = (2\sqrt{13})^2 - \sqrt{5}^2 = 4 \cdot 13 - 5 = 52 - 5 = 47$$

Ответ: 47

$$n6 \quad (12802 - 12625) \cdot 1,8 = 177 \cdot 1,8 = 318,6$$

Ответ: 318,6

$$n7 \quad \frac{1}{3x-4} = \frac{1}{4x-11} \quad \text{OD3:} \quad \begin{aligned} &3x-4 \neq 0 && 4x-11 \neq 0 \\ &x \neq \frac{4}{3} && x \neq 2,75 \end{aligned}$$

Ответ: 7

$$n8 \quad 16 - 15,7 = 0,3$$

Ответ: 0,3

$$n9 \quad \text{Ответ: } 2413$$

$$n10 \quad \frac{9}{25} = 0,36$$

Ответ: 0,36

$$n11 \quad \text{Ответ: } 5$$

$$n12 \quad 1) \quad 15000 : 100 \cdot 7 = 150 \cdot 7 = 1050p$$

$$2) \quad 22000 : 100 \cdot 3,5 = 220 \cdot 3,5 = 770p$$

$$3) \quad 19000 : 100 \cdot 4 = 190 \cdot 4 = 760p$$

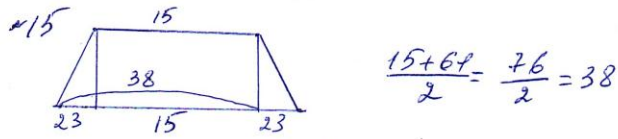
$$4) \quad 16500 : 100 \cdot 6 = 165 \cdot 6 = 990p$$

Ответ: 1050

n13 $d^2 = 2^2 + 2^2 + 1^2 = 9$ $d = 3$

Jawab: 3

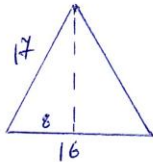
n14 Jawab: 3412



$$\frac{15+23}{2} = \frac{38}{2} = 38$$

Jawab: 38

n16



$$h_0^2 = 17^2 - 8^2 = 289 - 64 = 225 \quad h = 15$$

$$S_{\text{d.p.}} = \left(\frac{1}{2} \cdot 16 \cdot 15\right) \cdot 4 = 120 \cdot 4 = 480 \quad S_{\text{cek}} = 16 \cdot 16 = 256$$

$$S_{\text{u.}} = 480 + 256 = 736$$

Jawab: 736

n17 Jawab: 1342

n18 Jawab: 23

n19 Jawab: 841

n20

$$\begin{cases} 3z = 4c + 1u \\ 7c = 4z + 1u \end{cases}$$

$$\begin{cases} 3z = 4c + 1u & | \cdot 4 \\ -4z = -7c + 1u & | \cdot 3 \end{cases}$$

$$\begin{cases} 12z = 16c + 4u \\ -12z = -21c + 3u \end{cases}$$

$$-5c + 7u = 0$$

$$7u = 5c \quad | \cdot 6$$

$$42u = 30c$$

Jawab: 30